

# EDUCATION GUIDE



THE BEST WINDOWS ARE MADE FROM



# Windows, doors and curtain walling

Profile 22 is the most widely specified window, door and curtain walling system for educational buildings. From tiny acorns grow mighty oaks; whatever your project requirements from small extensions through to extensive refurbishment we have the solution.

The benefits new windows can bring to schools, academies, colleges and universities are remarkable. Whilst instantly transforming a tired-looking building into a secure learning environment, PVC-U windows also vastly improve the thermal performance of the building and lower heating bills. The Building Research Establishment (BRE) rates PVC-U windows A+ for commercial buildings making it the most sustainable choice for specifiers.

## About Profile 22

Profile 22's windows and doors are the perfect solution for educational buildings to improve energy-efficiency, security, lower heating bills and transform a tired looking building. An investment in PVC-U windows and doors could be just what your building needs, and with our range of different foiled colour options, you can even match your school's colours.

Profile 22 is the UK's leading PVC-U window and door systems company boasting more than 40 years' experience. We are proud to say we possess the UK's most widely specified PVC-U window and door system. All of our products are backed-up by unrivalled technical support, knowledge of contracts, government initiatives and industry expertise.



Achieves  
0.8 U-value

THE BEST WINDOWS ARE MADE FROM







## Picking the right contractor has never been easier



### Get it right

Whatever the specification, budget, project size and demands of your project, we understand that picking the right contractor is never easy. Closing your building for refurbishment is not always an option. You need a contractor who can work around your busy timetable whilst ensuring minimum disruption.

Most schools replace their windows and doors as part of a phased completion process. Our contractors can create a works schedule, often spanning several years, which suits your school's financial requirements and plans. Profile 22 can also advise on the likely energy and maintenance savings that your school can expect when fitting new windows and doors.

Profile 22 takes the pressure off you with its network of Approved Window Contractors who operate nationally and regionally who have experience in education projects, meaning they can hit the ground running. Our network members hold the minimum standards such as constructionline/EXOR and quality accreditations you would expect such as Secured by Design and hold a valid certificate as proof of their 'Approved' status.



THE BEST WINDOWS ARE MADE FROM





## Profile 22 products

### PVC-U windows and doors

The highly specified fully accredited Profile 22 system includes an extensive selection of PVC-U windows, doors, curtain walling, SAFEWARE hardware and complementary accessories in a variety of styles and finishes to suit any building.

The system features a high performance centre seal system for enhanced insulation and weather protection - optional third seal. This greatly improves weathering performance and security, while the low line appearance maximises visual glass area and minimises the seal sightline for a more aesthetic look.

### Windows

We can design windows to suit your requirements. Our range includes:

- Styles: Choice of six basic designs with infinite variations
- Security: High security hinges and locking systems
- PVC-U Frames: Choice of 70mm Optima Chamfered or Sculptured, Flush Casement, Flush Tilt-Turn, Fully Reversible and Vertical Sliding
- Glazing: Choice of 24mm, 28mm, 36mm, 40mm and 44mm glazing and large range of finishes for improved energy efficiency and incorporating safety features
- Low Maintenance: Wipe clean surfaces and intermittent component lubrication
- Aesthetics: Slim sightlines, choice of handles and selection of frame finishes

### Curtain walling

The high performance purpose designed curtain walling system from Profile 22, offers a best value solution which combines quality, sustainability, aesthetics, price and performance making it the perfect choice when creating large areas of fenestration for refurbishment or new build schools projects.

- Superb strength and high performance
- PVC-U clad, thermally broken aluminium system
- Fully compatible with 70mm windows and doors
- Improved building aesthetics
- Accredited system - BSI tested
- Popular choice
- Glazing options
- Tried and tested solution
- Diverse range of colours
- Uniformity of product texture



## Doors

You can choose the door product that suits your school. Your choices include:

- **Safety:** Choice of safety glass, high security locks and push-bar panic devices
- **PVC-U:** High impact, energy efficient frames
- **Security:** Range of multi-point locking systems
- **Glazing:** 24mm, 28mm, 36mm, 40mm and 44mm safety glazing and a choice of panels and glazing types

## Colours to match

Profile 22 offers an diverse range of coloured foil finishes - our design team can work with you to match your colour scheme or create something totally unique.

- Diverse range of finishes including white, woodgrain, cream and grey
- Our extensive grey colour options offers a cost-effective alternative to aluminium
- Designed to be long-lasting, cost-effective and low maintenance
- Dual colour options available (e.g. different colour on the inside)
- **Low Maintenance:** Wipe clean surface and minimal component lubrication
- **Styles:** Entrance, French, patio, panelled or glazed
- **Accessibility:** A range of low threshold options in compliance with Document M



THE BEST WINDOWS ARE MADE FROM



## Why Profile 22?

Profile 22 is the UK's leading PVC-U window and door systems company boasting more than 40 years' experience.

We are proud to say we possess the UK's most widely specified PVC-U window and door system. All of our products are backed-up by unrivalled technical support, knowledge of contracts, government initiatives and industry expertise.

### Reasons to specify Profile 22

- Deeper drainage channels carry water away quickly and improve weather performance.
- No-obligation consultation meeting to establish your requirements
- Full specification help, advice and project planning from start to finish
- Field and office based technical support team
- Comprehensive specification information guide, including all product and legislation details
- Extensive choice and information of low-maintenance sustainable PVC-U windows, doors, curtain walling and ancillaries
- SAFEWARE hardware for peace of mind concerning security
- Wide range of glazing, aesthetically pleasing styles and finishes
- Designed and tested to meet all relevant industry standards and Building Regulations to ensure optimum quality, durability and energy efficiency
- Working with windows since 1976
- Committed to protecting the environment and reducing carbon emissions through recycling, manufacturing low carbon products and company initiatives
- Dedicated specification support team
- Nationwide network of Approved Window Contractors manufacturing high quality PVC-U windows and doors
- 52,000 frames manufactured using Profile 22 every week
- Part of the British owned Epwin Group





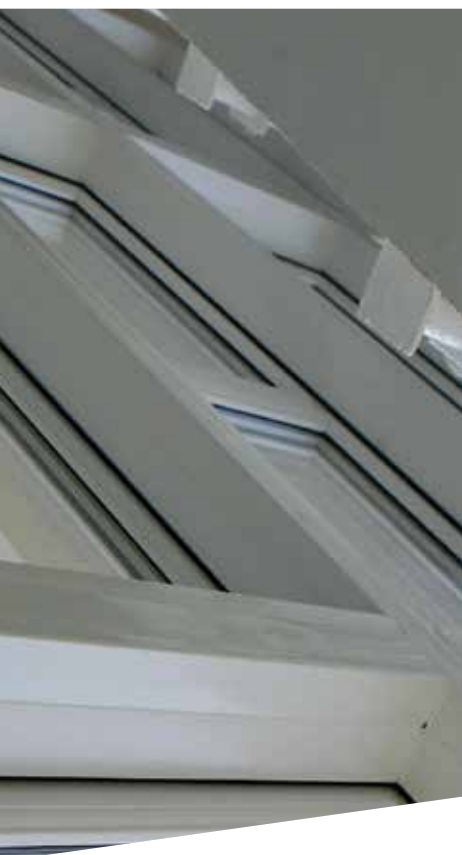


Achieves  
0.8 U-value

THE BEST WINDOWS ARE MADE FROM

PROFILE22<sup>®</sup>





## Safety

We can advise on a specification to comply with legislation like Document B which governs fire escapes.

There is a wide range of safety glass available to suit different applications.

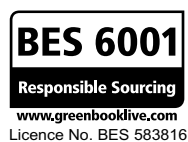
## Security

Protecting your school's resources has never been more important and by correctly specifying your windows and doors, intruders can be deterred.

Security features now available include internal glazing, shoot bolt espagnolette locking, locking handles, multi-point door locks, hook bolts and reinforced glass. All fully accredited to Secured By Design for added peace of mind.

## Fully accredited system

The window is Secured by Design accredited giving peace of mind to the end-user that the product meets police approval for security and ensures the windows are tested and approved to BS7950 security standard. Certified manufactured to BES6001 proving our products are made with constituent materials that have been responsibly sourced and allows additional points under BREEAM.



**breeam**

THE BEST WINDOWS ARE MADE FROM



## Quality

Profile 22 is approved more often by more Local Education Authorities and Headteachers than any other PVC-U window system. That is because it carries every appropriate independent quality accreditation. British Standards Institute kitemarks, British Board of Agrément certification and Secured By Design.

## Health and safety

Profile 22's network of specialist fabricators have considerable experience working within recognised health and safety controlled working conditions and in particular within the disciplines required by educational establishments.

## Maintenance


PVC-U products offer lower maintenance compared to other materials traditionally used in the manufacture of windows and doors. There is no repainting and the general construction of PVC-U is more durable than alternative materials. Profile 22 can advise on the selection of suitable products that will meet your security, safety and comfort requirements and reduce your maintenance costs.

## Energy efficiency

Profile 22 fully commit to the Kyoto Protocol and the BFRC energy efficiency ratings scheme, ensuring all products meet the stringent energy efficiency legislation. Document L of the Building Regulations (Document J in Scotland, Document L in Republic of Ireland, Document F in Northern Ireland) sets strict standards on the performance of windows and doors.

We can advise on the right specification for your school. In the process, you'll be creating warm and more comfortable classrooms, making a valuable contribution to the environment and lowering heating bills.





A warmer,  
quieter school

THE BEST WINDOWS ARE MADE FROM



# Case studies

## Rivington and Blackrod School, Bolton

### Background:

This 19th Century building required the refurbishment of 160 windows, including the replacement of arched windows and the preservation of original glazed lights which featured a design of the school's crest.

### Benefits:

- Project completed in term time with minimum disruption to 1,650 pupils and with strict health and safety procedures
- Fully integrated Profile 22 70mm window system
- Excellent thermal performance
- Advanced glazing and high performance products for heat retention during the winter and heat reflection during the summer
- Retained character and complemented the building style
- Low maintenance
- High security



## St. Pius RC Primary, Dundee

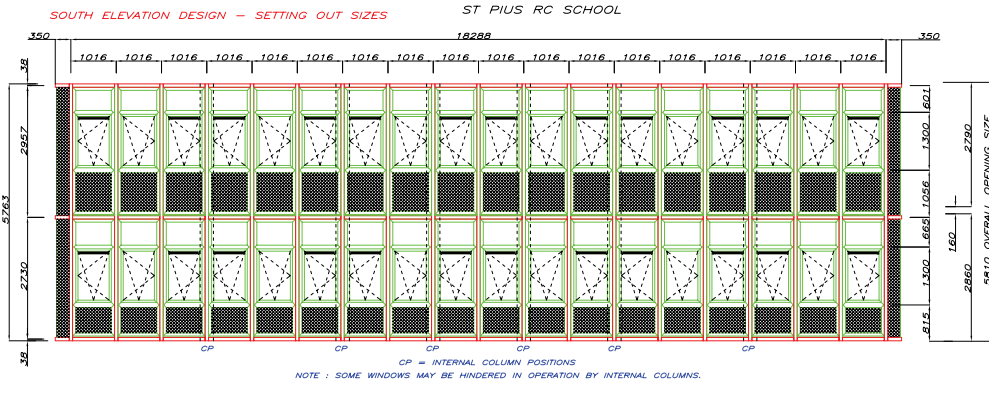
### Background:

The brief involved the installation of 112 tilt & turn windows in 70mm, 360m<sup>2</sup> of curtain walling and 70mm insulated panels. The installation instantly revived a tired looking building, with a dramatic improvement aesthetically from external and internal perspective.

### Benefits:

- Attractive curtain walling covering large area of fenestration
- Watertight and draught proof windows and doors
- Attractive appearance and functional
- Improved thermal efficiency
- Lower fuel bills through heat saving design
- Low maintenance costs





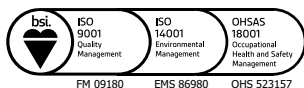
For further information

call 01952 290910

Email: [specifier@profile22.co.uk](mailto:specifier@profile22.co.uk)

[www.profile22.co.uk](http://www.profile22.co.uk)

Profile 22 Systems, Stafford Park 6, Telford, Shropshire, TF3 3AT



BS EN 12608  
KM12895  
PROFILE



BS EN 12608/PAS24  
KM33523  
ENHANCED SECURITY  
WINDOW SYSTEMS  
SUPPLIER



BS EN 12608/PAS24  
KM56791  
ENHANCED SECURITY  
DOOR SYSTEMS  
SUPPLIER



BS 8529/PAS24  
KM594776  
ENHANCED SECURITY  
DOOR SYSTEMS  
SUPPLIER



PROFILE 22 is an international PVC-U profile system supplied to local independent manufacturers and installers who contract to install windows, doors and conservatories. PROFILE 22 SYSTEMS cannot be held accountable for manufacture or installation by independent companies. All information in this publication is provided for guidance only and is given in good faith. As it is company policy to continually improve products, methods and materials, changes of specification may be made from time to time without prior notice. This statement does not affect your statutory rights. © PROFILE 22. Part of the Epwin Group Plc. PRO/14985

